

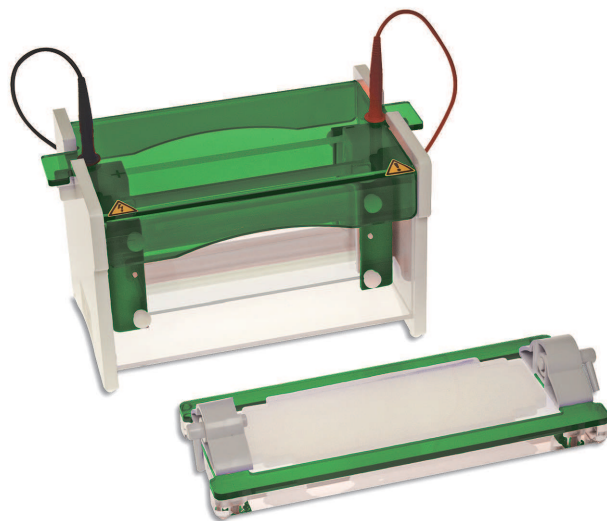
Plate dimensions	20x10 cm
Gel dimensions	18x8 cm
Number of gels	1 to 4
Buffer volume	600 ml to 2800 ml
Sample Capacity	192 (48 per gel)
Unit Dimensions	26x16x16 cm

Recommended power supply

EV2310
EV2650

EVS1200 allows double the number of samples to be resolved as the mini unit. This allows consistency of sample comparison on a single gel and is designed for those with greater than 20 samples to compare and resolve.

Simple set up using ultra soft silicone seals guarantees trouble free glass plate loading and gel casting. Dual gaskets on the gel running insert along with notched and plain glass plates ensure leak proof gel running. Rapid set up cooling retains resolution in extended separations and also saves on buffer volume. 4 mm thick glass plates prevent breakage and have bonded spacers for convenience.



● Ordering codes

Code	Description
EVS1200-SYS	Mini-wide vertical unit, 2 sets of glass plates with bonded 1 mm thick spacers cooling pack, dummy plate, casting base 2 combs: 12 sample, 1 mm thick, 24 samples

Combs

Code	Description	Sample volume
EVS1300-C5-0.8	0.75 mm thick, 5 sample	160 µl
EVS1300-C10-0.8	0.75 mm thick, 10 sample	80 µl
EVS1300-C24-0.8	0.75 mm thick, 24 sample	30 µl
EVS1300-C30-0.8	0.75 mm thick, 30 sample	25 µl
EVS1300-C48-0.8	0.75 mm thick, 48 sample	15 µl
EVS1300-C5-1.0	1 mm thick, 5 sample	200 µl
EVS1300-C10-1.0	1 mm thick, 10 sample	100 µl
EVS1300-C24-1.0	1 mm thick, 24 sample	40 µl
EVS1300-C30-1.0	1 mm thick, 30 sample	35 µl
EVS1300-C48-1.0	1 mm thick, 48 sample	20 µl
EVS1300-C5-1.5	1.5 mm thick, 5 sample	320 µl
EVS1300-C10-1.5	1.5 mm thick, 10 sample	160 µl
EVS1300-C24-1.5	1.5 mm thick, 24 sample	60 µl
EVS1300-C30-1.5	1.5 mm thick, 30 sample	50 µl
EVS1300-C48-1.5	1.5 mm thick, 48 sample	30 µl
EVS1300-C5-2.0	2 mm thick, 5 sample	400 µl
EVS1300-C10-2.0	2 mm thick, 10 sample	200 µl
EVS1300-C24-2.0	2 mm thick, 24 sample	80 µl
EVS1300-C30-2.0	2 mm thick, 30 sample	70 µl
EVS1300-C48-2.0	2 mm thick, 48 sample	40 µl

Preparative Combs

Code	Description	Sample volume
EVS1300-P1-0.8	0.75 mm thick, prep 1, marker 1	1100 µl
EVS1300-P1-1.0	1 mm thick, prep 1, marker 1	1500 µl
EVS1300-P1-1.5	1.5 mm thick, prep 1, marker 1	2200 µl
EVS1300-P1-2.0	2 mm thick, prep 1, marker 1	3000 µl

Microtiter Combs

Code	Description	Sample volume
EVS1300-CMT18-0.8	0.75 mm thick, 18 sample MC	40 µl
EVS1300-CMT36-0.8	0.75 mm thick, 36 sample MC	20 µl
EVS1300-CMT18-1.0	1 mm thick, 18 sample MC	50 µl
EVS1300-CMT36-1.0	1 mm thick, 36 sample MC	25 µl
EVS1300-CMT18-1.5	1.5 mm thick, 18 sample MC	80 µl
EVS1300-CMT36-1.5	1.5 mm thick, 36 sample MC	40 µl
EVS1300-CMT18-2.0	2 mm thick, 18 sample MC	100 µl
EVS1300-CMT36-2.0	2 mm thick, 36 sample MC	50 µl

Replacement parts & Accessories

Code	Description
EVS1200-BASE	Gel casting base, 20 cm
EVS1200-SILMAT	Replacement silicone mat for gel casting base, 20 cm
EVS1200-GELINSERT	Inner running module
EVS1200-COOL	Maxi cooling pack
EVS1200-NGLASS	Notched glass plates, 20x10 cm, 4 mm thick, pk/2
EVS1200-GLASS	Glass plates, 20x10 cm, 4 mm thick, pk/2
EVS1200-GLASS-SP-0.8	Glass plates, 20x10 cm, + 0.75 mm bonded spacers, pk/2
EVS1200-GLASS-SP-1.0	Glass plates, 20x10 cm, + 1 mm bonded spacers, pk/2
EVS1200-GLASS-SP-1.5	Glass plates, 20x10 cm, + 1.5 mm bonded spacers, pk/2
EVS1200-GLASS-SP-2.0	Glass plates, 20x10 cm, + 2 mm bonded spacers, pk/2
EVS1200-DUMMY	Dummy plate, 20x10 cm
EVS1300-SP-0.8	Spacers, 0.75 mm thick, 10 cm, pk/2
EVS1300-SP-1.0	Spacers, 1 mm thick, 10 cm, pk/2
EVS1300-SP-1.5	Spacers, 1.5 mm thick, 10 cm, pk/2
EVS1300-SP-2.0	Spacers, 2 mm thick, 10 cm, pk/2
E1091	Replacement platinum wire, 0.2 mm thick, 50 cm